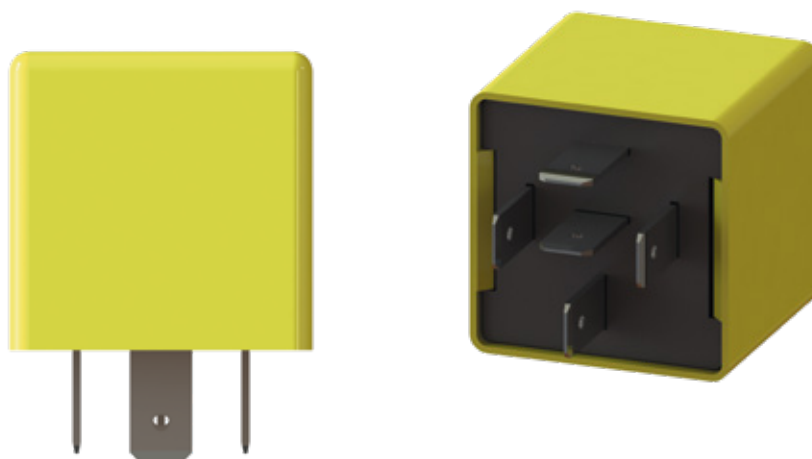


# DAMPER CONTROL

HVAC + R

STANDARD



## MAIN FUNCTIONS

FLAP ON /OFF CONTROL

AIR CONDITIONING

REFRIGERATION

FRONT BOX

## CHARACTERISTICS

Microprocessor module for flap control.

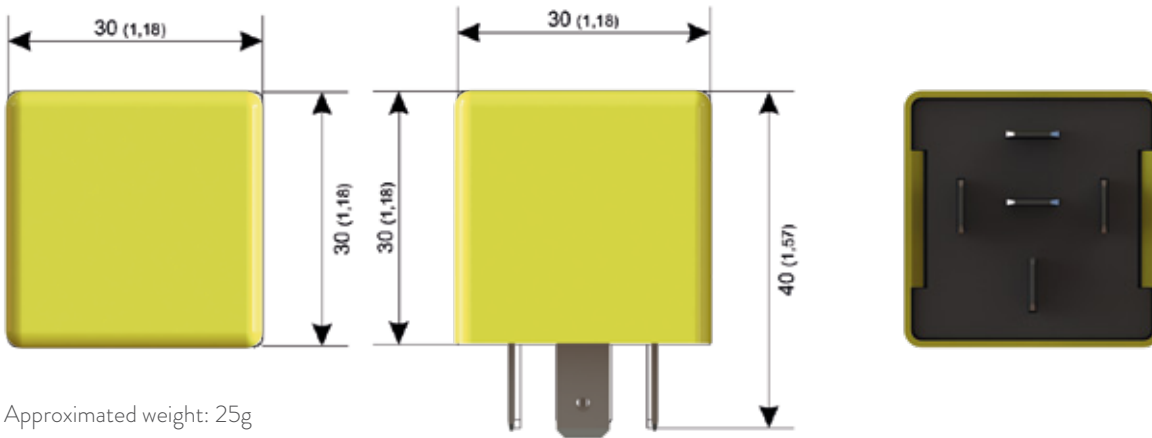
Controls a motor with a maximum current of 1A.

Has motor short protection.

## AVAILABLE FOR



# TECHNICAL DATA



Approximated weight: 25g

TECHNICAL DATA	
NOMINAL VOLTAGE	12 Vdc / 24 Vdc
VOLTAGE RANGE	10 Vdc / 30 Vdc
MAXIMUM VOLTAGE	32 Vdc during 5min
MAXIMUM CURRENT PER OUTPUT	500 mA
OUTPUT SHORT-CIRCUIT	Protected *
REVERSE POLARITY	Protected *
OPERATING TEMPERATURE	-40°C to +85°C
STORAGE TEMPERATURE	-40°C to +80°C / -40°F to +176°F
PROTECTION DEGREE	IP 50
CONNECTOR	Standard relay socket
MAXIMUM CURRENT CONSUMPTION	6mA @12v / 18mA 24v
STANDBY CONSUMPTION	N/A
Observações: MOTOR SUGGESTION: BOSCH (CODE:0 132 801 143) / ACTIVATION TIME: 5 SECONDS	

\* According to product configuration. \*\* Consumption may vary according to customer specifications. We keep the right to update or change information regarding products without prior notice.

## DAMPER CONTROL / FRESH AIR CONTROL

GL-D012

